

Complete **Security**
Southern Limited



Supplied & Installed By Complete Security



NSI Gold Installer

We are an NSI Gold Installer, which is a scheme for companies who constantly meet the industry's highest standards through ISO9000 Quality Management, as well as the relevant British and European Standards. We are routinely vetted to ensure we operate to the highest of standards and are run in a professional and competent manner.



Authorized AJAX Installer

As an authorized partner of Ajax Systems, we will supply and install your wireless Ajax alarm system allowing you to deter burglars, prevent fires, detect flooding and control appliances.



AJAX FAQ

What can I make my Ajax system do?

Ajax can be easily expanded with entry, fire and flood detectors, as well as relays for managing electrical appliances remotely. You can purchase and add additional devices to the system individually. Detectors can be connected with a few taps in the mobile app.

Do Ajax devices really work that far away from the hub?

We've tested the maximum distance between the hub and detectors in open space, and it really does reach 2,000 meters. Your experience may vary, since walls, ceilings and other barriers will shorten that distance. If you're unsure, you can do a radio test using the Ajax Security Systems app to determine the signal strength before you install detectors.

How often do device batteries need to be changed?

Ajax devices are powered by batteries, not from the network, which is how wired systems work. With that in mind, we developed a special energy-efficient radio protocol that keeps them protecting your home or office for as long as possible— up to 7 years. Once the battery reaches a critical level, Ajax will send you a notification. If you're curious, you can always double check battery levels at any time in the device settings.

How do I monitor the Ajax security system?

The easiest way to monitor is to use the Ajax Security System application for iOS and Android. The app will let you arm/disarm the system and keep tabs on your devices (including information on signal status, battery level and temperature). The system can also be controlled with Ajax SpaceControl, KeyPad or KeyPad Plus.

Will my cat or robot vacuum set off an alarm?

Ajax devices use a digital algorithm to detect human movement. As long as your pets are smaller than 50 centimeters (19.5 inches) and 20 kilograms (44 lbs), they shouldn't set off your Ajax detectors.

Can I add and remove system users?

Yes, if you are an administrator with full access to the system settings. Up to 99 users can be connected to one security system. They can be family members, friends, neighbors, colleagues or even a security com



AJAX

Indoor Security



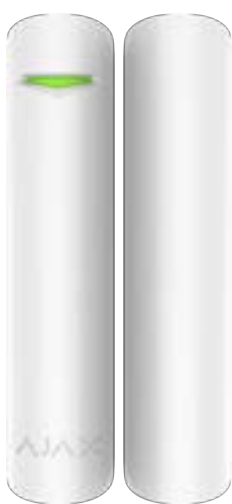
Motion Protect



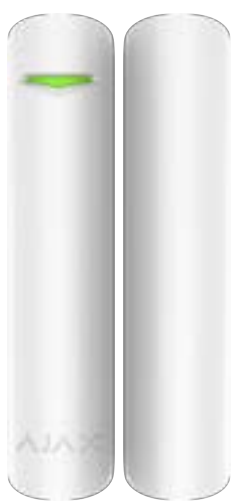
Motion Protect Plus



Motion Cam



Door Protect



Door Protect Plus



Glass Protect



Motion Protect Curtain



Fire Protect



Leak Protect

Indoor Security



Motion Protect

Wireless motion detector that notifies the owner of the first signs of home or office intrusion.



Principle of operation

The device detects human presence by IR level using a passive IR sensor. The data received is digitally processed in order to prevent false alarms.

Features

The device automatically increases or decreases the sensor sensitivity in order to accurately detect motion during hot and cold weather.

Indoor Security



Combi Protect

Wireless combined motion and glass break detector. The device helps to secure the room from intruders entering through doors and windows, and monitors the current state of the glass..



Principle of operation

The device combines the functions of two detectors — motion detector and glass break detector. It detects motion in the room at a distance of up to 12 m and registers broken glass at a distance of up to 9 m from the window.

Features

The device detects motion even in hot climates by means of temperature compensation. It filters false alarms caused by thunder, dogs barking or the sound of passing trucks.

Indoor Security



Motion Cam

Wireless motion detector with inbuilt stills camera, enabling you to see what triggered an alarm. The detector spots people's motion within a 12-meter range and takes a series of photos.



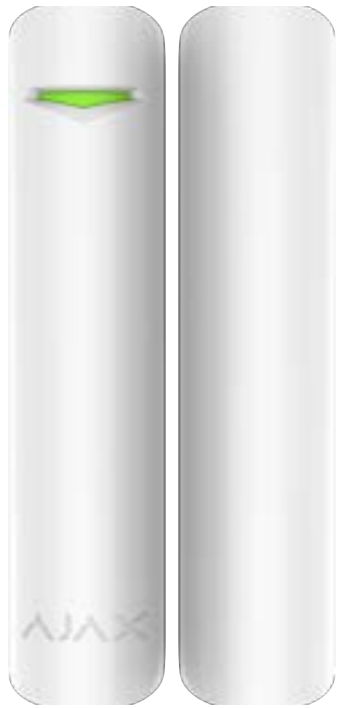
Principle of operation

MotionCam Jeweller will show the actual situation from the scene even before the burglars understand that they're busted. An animated series of photos follows the instant alarm for an accurate situation appraisal. MotionCam Jeweller can only take photos in case of an alarm. The detector software architecture does not support taking a photo on demand.

Less Concern

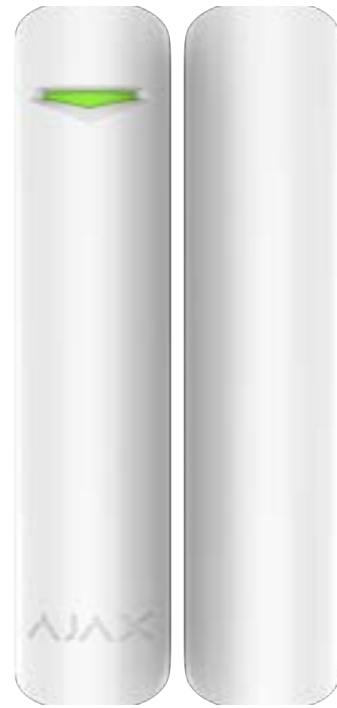
Up to 70% of false alarms happen when disarming the security system. With MotionCam, system users and monitoring company operators can verify in seconds whether an alarm is real and respond accordingly.

Indoor Security



Door Protect

A wireless opening detector that notifies at the first signs of room intrusion through a door or window. It can be mounted on all types of doors including metal frames.



Door Protect Plus

A wireless door contact + tilt sensor that helps to protect doors & windows on your property. The accelerator registers changes in the vertical slope angles, bangs, or vibration & sends an alert to the hub.

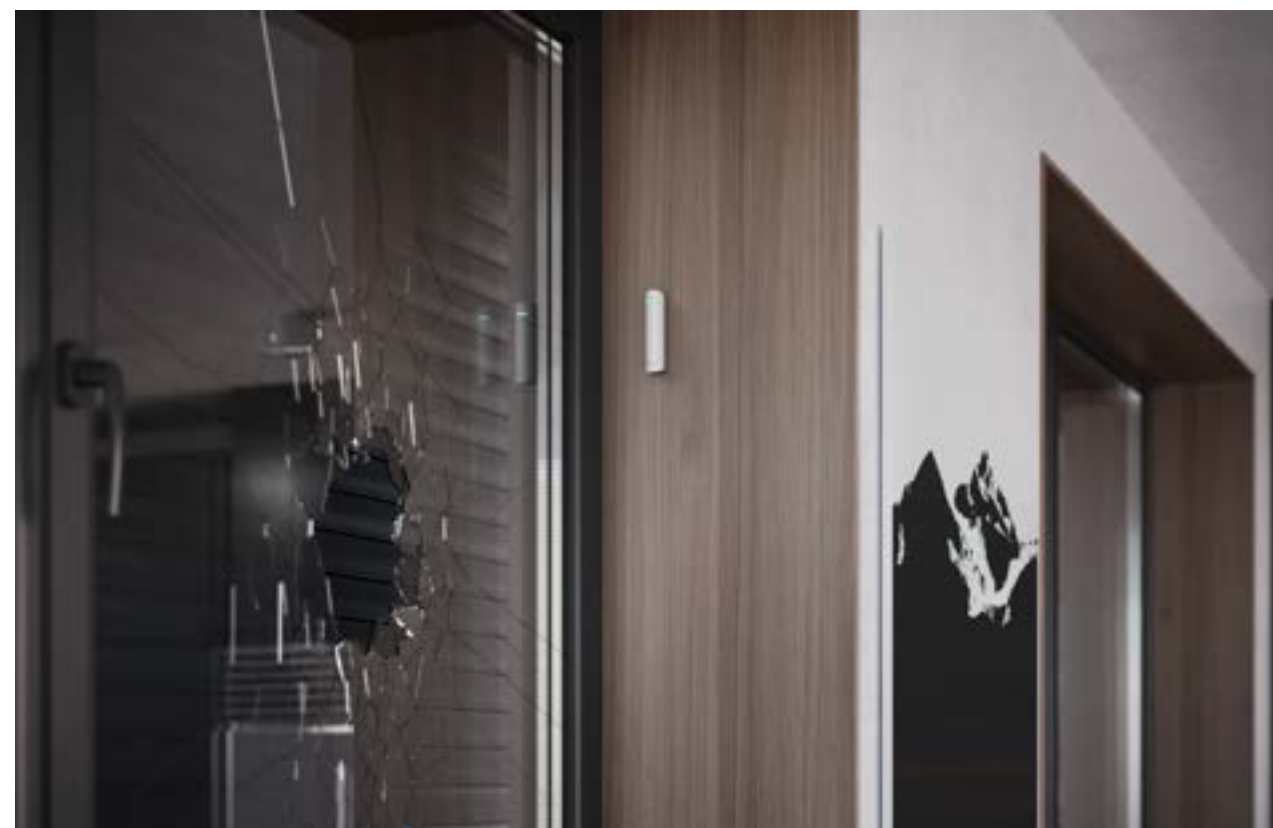


Indoor Security



Glass Protect

A miniature wireless detector that registers glass breaking from up to 9 meters. If intruders break a window, the system immediately notifies users.



Principle of operation

Detects broken glass using an electret microphone, which registers the sound of impact against the glass and of the glass falling.

Features

Two-factor detection of broken glass prevents false alarms caused by thunder, dogs barking and noise from passing trucks.

Indoor Security



Motion Protect Curtain detectors, secure the perimeter of your property allowing you to freely move indoors. If a stranger breaks in, the system will raise an alarm.

Motion Protect Curtain



AT HOME

With the MotionProtect Curtain detectors, you can secure the perimeter of your house and freely move indoors. If a stranger breaks in, the system will raise an alarm and call the security company.

IN A GARAGE

Burglars won't get through the garage door undetected when MotionProtect Curtain is in action. The curtain detector will continue to operate even if the temperature drops to -10°C.

AT A MUSEUM

The visitors can stroll the exhibits as they please. But if they cross the line and reach towards an artwork, an alarm will be raised.

Indoor Security



Fire Protect

The Ajax Fire Protect is a Wireless Smoke & Heat Detector featuring Smoke & Temperature detection that monitors security in a room 24/7 & immediately notifies of smoke & sharp jumps in temperature.



Principle of operation

The device detects smoke by means of a camera with photoelectric sensor. If no smoke is emitted, the additional detector registers temperature increase in the room.

Features

It can operate independently from the hub, emitting a fire alarm by means of a built-in siren. Several detectors indicate an alarm simultaneously.

Indoor Security



Leak Protect

The Leaks Protect from Ajax Systems, the most awarded wireless security system in Europe, is a Wireless Flood Detector used for identifying leakage in milliseconds & raising an alarm.



Principle of operation

LeaksProtect detectors can protect from flood both small apartments and commercial centres/industrial complexes. If an accident happens, informative notifications will let you know where to send the plumbers.

The smart technology can also register when the area dries out & cancels the alarm previously raised. The huge advantage of the Leaks Protect is that installation literally takes a minute or less. The detector simply has to be placed on the floor under a washing machine/dishwasher/bath or any other appliance that could cause a leak.

Outdoor Security



Motion Protect Outdoor



Motion Cam Outdoor



Dual Curtain Outdoor

Outdoor Security



The Motion Protect Outdoor features the maximum possible protection for outdoor detectors. It offers intelligent protection against false alarms, the wireless external PIR detector can detect movement at a distance between 3-15m whilst ignoring pets of a height up to 80cm & operates up to 5 years without needing to replace the battery.

Motion Protect Outdoor



An outdoor detector is an easy target. During the day when the system is disarmed, intruders may damage the sensors or block their view to gain an advantage in trespassing at night. To prevent the cases of sabotage, we've equipped MotionProtect Outdoor with a tamper button and an advanced anti-masking system that can remain active 24/7.

The anti-masking system in MotionProtect Outdoor calibrates automatically by analyzing the surrounding area when mounting the device onto SmartBracket. Then, if an obstacle appears in the field of view of anti-masking sensors or if they are painted, the detector quickly notices sabotage and raises the alarm. Moreover, a sensitive tamper is immediately activated if someone attempts to dismount the detector from SmartBracket.

Outdoor Security



Motion Cam Outdoor

Motion Cam Outdoor combines the intelligent Motion Protect Outdoor PIR technology with a stills camera.



An outdoor camera often has to shoot in difficult lighting conditions. Direct sunlight, reflective surfaces, or street lights can blind the camera, depriving the image of critical details. This is unacceptable for a security device. We were challenged to get a clear and sharp image that would confirm intrusion in seconds and allow security companies to react in time.

Motion Cam Outdoor recognizes intrusion and confirms with an animated series of photos. Visual verification helps to instantly ascertain the situation, saving users from concerns, and security companies from unnecessary patrol dispatches.

AJAX

Outdoor Security

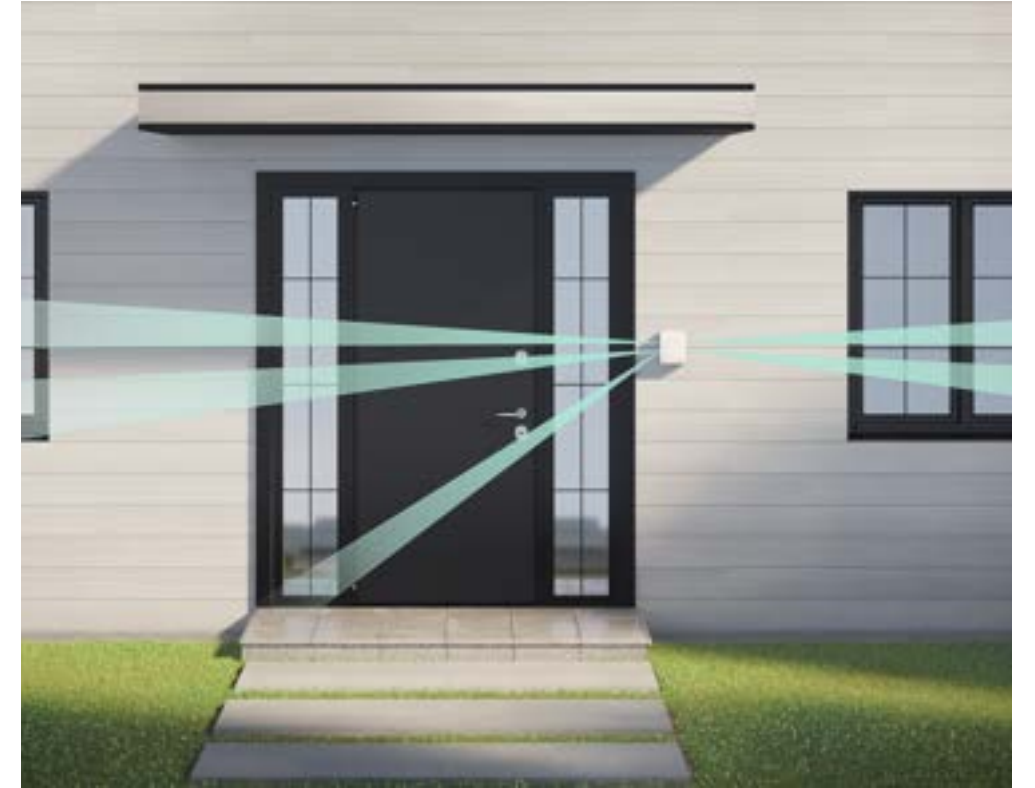
3/4

Outdoor Security



Dual Curtain Outdoor

Dual Curtain Outdoor protects your properties perimeter. Two independent optical systems with narrow viewing sectors and flexible settings allow accurate adjustment of the 30 meter detection zone, excluding possible sources of false alarms.



On the sides of the detector there are two optical systems with narrow viewing sectors, each equipped with two PIR sensors. Thanks to temperature compensation, detection is always accurate. Sensor signals are analyzed by our new ELSA digital algorithm. Only if two sensors of the same optical system simultaneously capture human motion, the detector activates an alarm.

DualCurtain Outdoor can not be unnoticeably blinded or disabled even if Ajax is disarmed. Detector's optical systems are reinforced with advanced masking sensors that respond to obstacles, covering and painting the lenses. The tamper will not allow to unnoticeably remove the device from the mount. And even if the detector is instantly destroyed, it will take the hub less than a minute to detect the loss of communication and inform a central monitoring station and users about the problem.

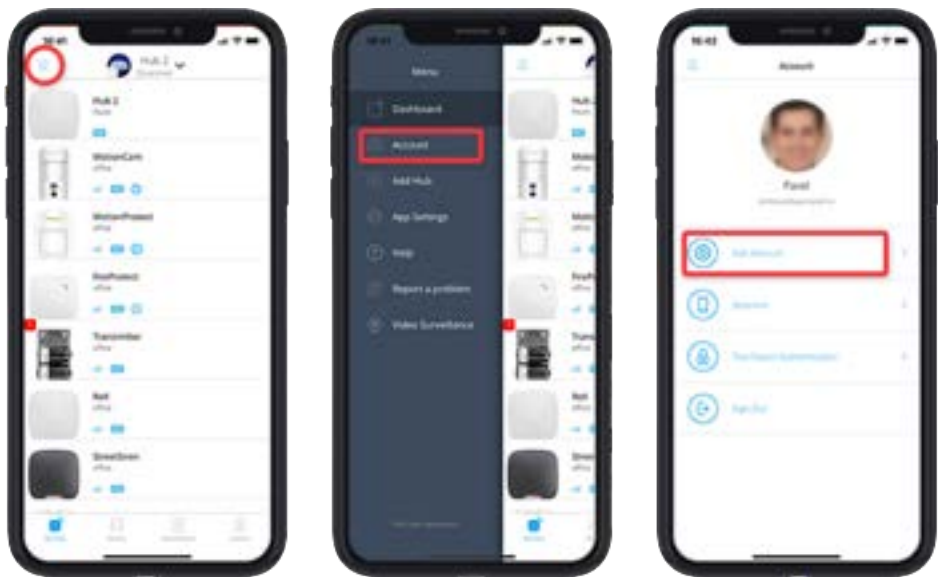
The ELSA (Extended Live Signal Analysis) unique software reacts to intruders, screening out triggers like natural interference and pets.

AJAX

Outdoor Security

4/4

Control



AJAX App



Space Control



Keypad



Keypad Plus

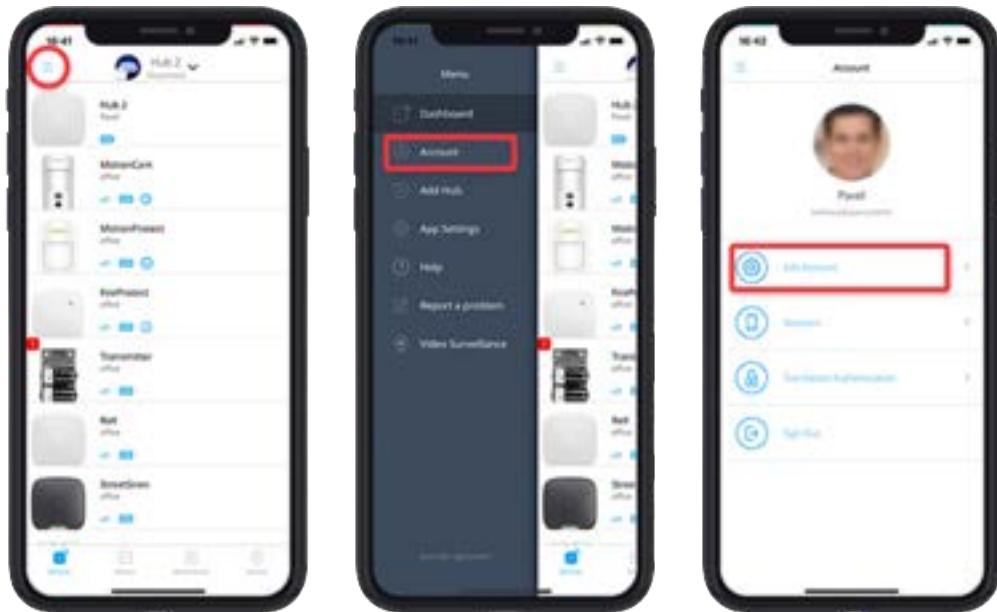


Pass



Tag

Control



AJAX App



Free mobile app for users.

Arm, disarm, set night mode or activate panic mode via the lightning fast Ajax app. Get notifications and monitor your security in one single app.

Virtual panic button

Report an emergency so that other users can come to the rescue.

Notification tab

You'll always know exactly what happened and when. Keep track of who made system changes.

Detailed device status

Get instant information about battery levels, room temperature and settings.

Test devices

Adjust detection zones and test radio signal quality while you're far from home.

Control



Space Control

A key fob for controlling security modes. Features a panic button for sending alarms to your inner circle and a security company in case of trouble.



The device controls the security modes and sends an alarm signal to the Central Monitoring Station by pressing the key fob panic button.

Authentication prevents forgery of the device and false alarm signals.

Control



Keypad

The device operates security modes when a digital code is entered on the keypad. Indication notifies of current security status, problems with detectors or breakdown of communication with the hub.

Alarm button is available. It notifies of each attempt to guess the code and blocks automatically if the permissible number of entries is exceeded.

Wireless touch keypad is used for arming/disarming of Ajax security system. It is mounted in the room near the entrance door to provide quick access to the keypad.



Keypad Plus

Key Pad Plus is a combination of design, advanced encryption technology, and elaborated user experience for the most straightforward and protected security management. Arm and disarm, activate Night Mode and manage specific groups with a Pass card or Tag key fob.

Control



Tag



Pass

Encrypted contactless key fob or pass for keypad.
Disarm the security system, just present to the reader on the keypad. This copy-protected key fob allows you to manage security modes without a password, user account and access to the Ajax app.

In the app, you can set the name and access permissions for each key fob. You always know who and when changed the security mode — every action is recorded in the event log. A system administrator can revoke or restrict Tag access permissions in real time.



Buttons



Button

Button immediately notifies about intrusions, gas leaks, or fire. Moreover, it can request medical help and inform relatives about a sudden health deterioration in just one click. In the panic mode, the device supports 4 types of alarms. An accurate alarm response is guaranteed. Moreover, Button can manage smart home appliances by activating scenarios with a single or double clicks.



Double Button

Double Button supports confirmed alarms. This feature implies instructing users: what sequence of presses is required to generate a confirmed alarm condition. It gives a 100% guarantee that a hold-up alarm was raised intentionally and only by an authorized user.



Home Siren



Home Siren

Wireless indoor siren that loudly notifies of an alarm during detector activation. It is installed indoors to warn of danger or deter intruders.



The device notifies of detector activation with an audible alarm. Sound level and alarm length are set in the mobile application.

Connector for external LED is available. It can be mounted outside your apartment or office to monitor the security system status.

Street Siren



Street Siren

Wireless siren with LED frame and piezoelectric buzzer. The device is designed for both outdoor and indoor installation.



StreetSiren responds to alarms and tampers triggering by activating the buzzer and LED frame in less than a second. The tamper button triggers when the enclosure is opened or broken, and the accelerometer triggers when somebody's attempting to move or dismantle the siren.

The buzzer can be set to generate sound from 85 to 113 dB for an adjustable period from 3 to 180 seconds, or it can be completely silent and respond only with LED indication. StreetSiren's hermetically sealed body has been rated IP54 level of ingress protection.

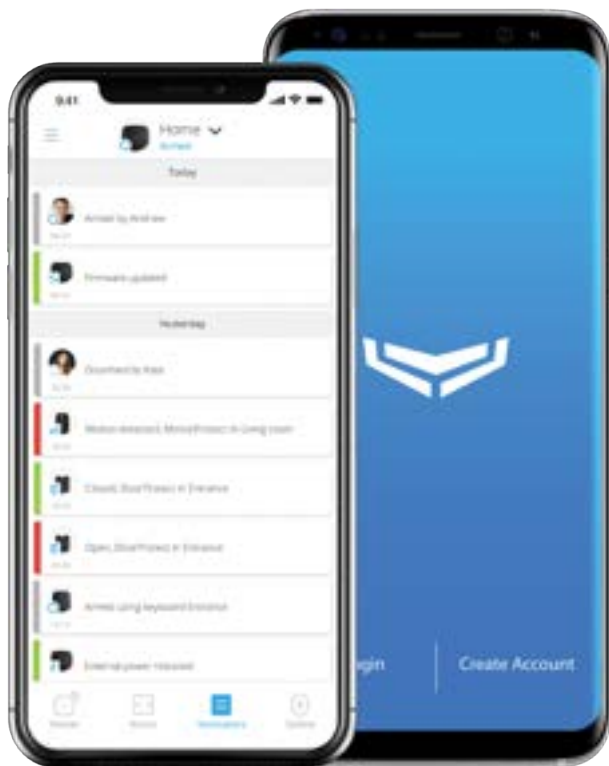
Standard Kit

- Mobile App Supported
- 2 Motion Protects
- 1 Door Protect
- 1 Home Siren
- 1 Street Siren
- 2 Space Controls
- 1 AJAX Hub Panel



12 Months warranty and full customer support.
No monthly or hidden fees.
Supplied and installed by Complete Security.

£900.00
inc. VAT



02380 899076
WWW.COMPLETE-SECURITY.CO.UK

AJAX
Standard Kit